

Financial Analysis Report

Ticker: ^GSPC

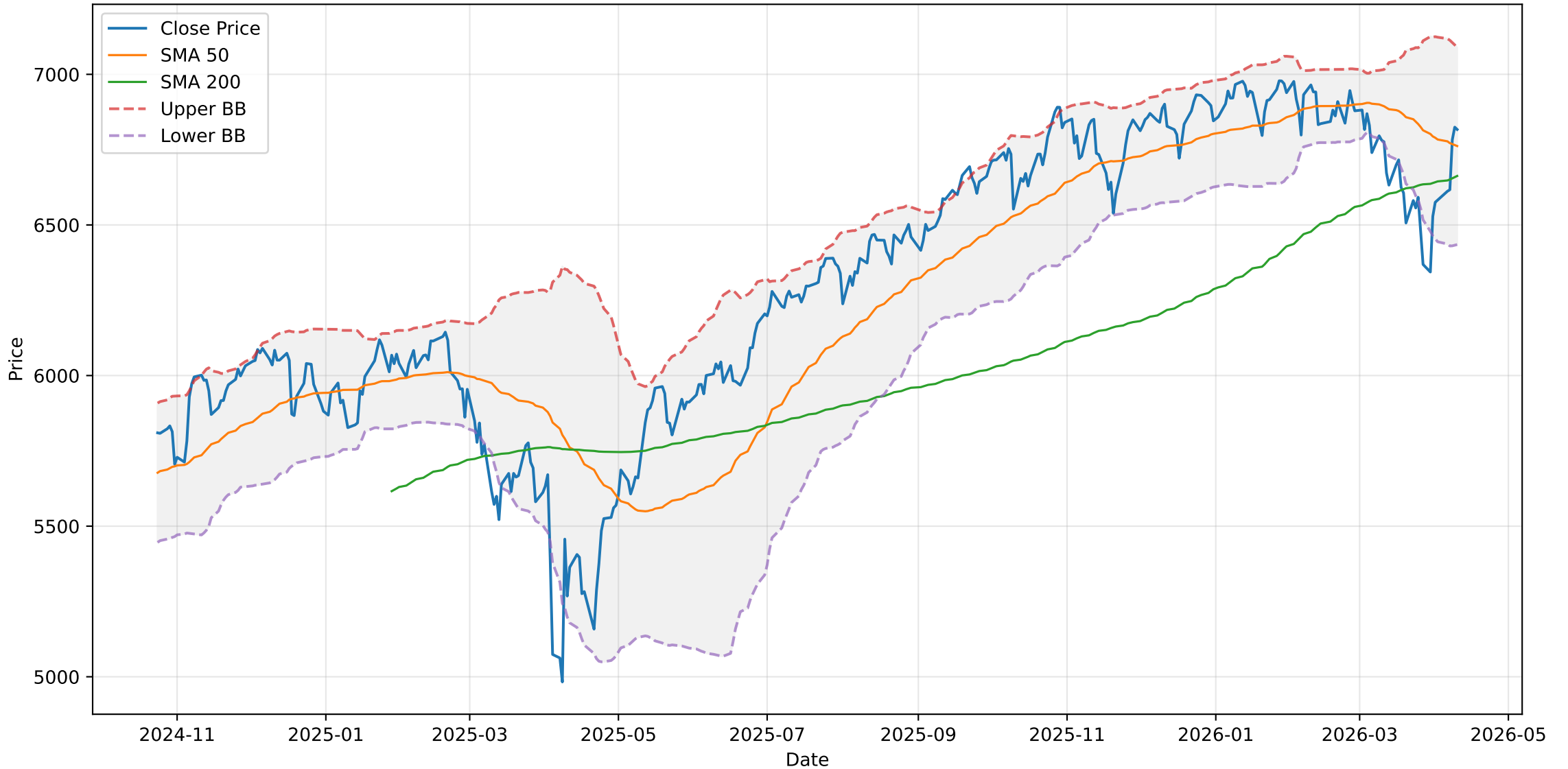
Analysis window: last 365 trading days

Indicators: SMA · BB · MACD · RSI · Fibonacci · Monte Carlo · ATR · OBV · Stochastic · ADX

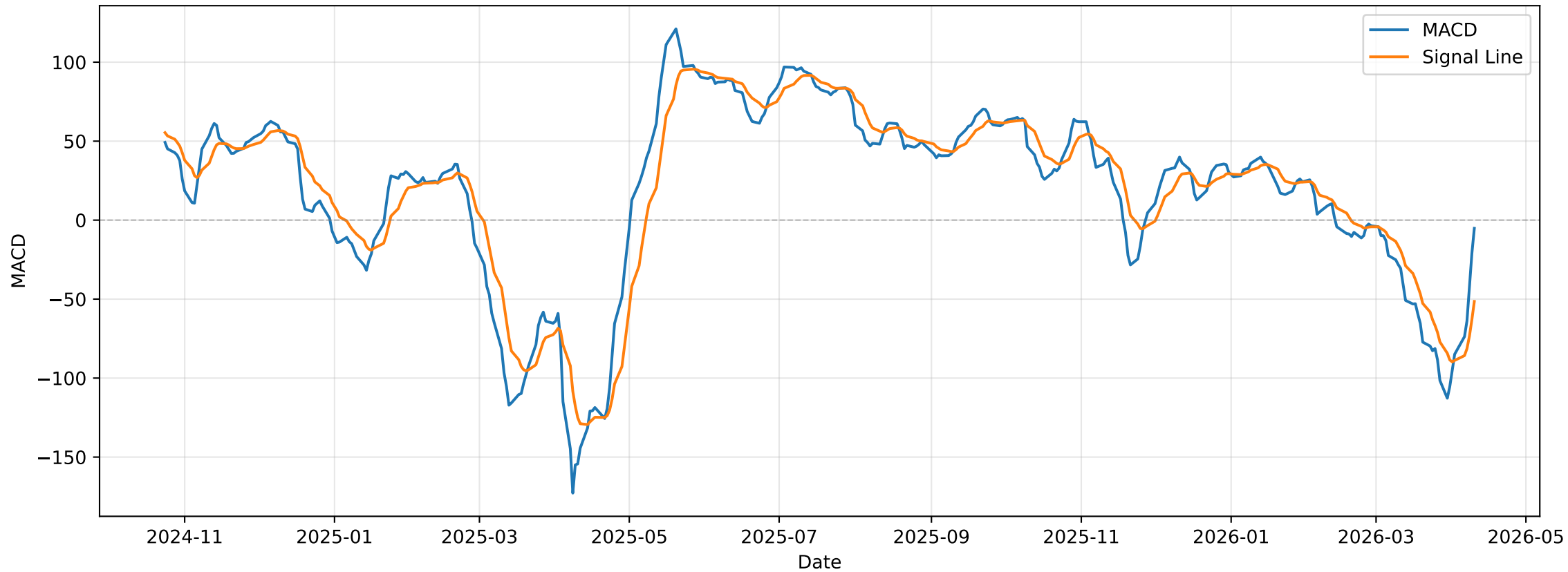
Generated: April 11, 2026 07:31 PM

@lbarqueira.bsky.social — Generated with Python and matplotlib

^GSPC: Price & Bollinger Bands (last 365 days)



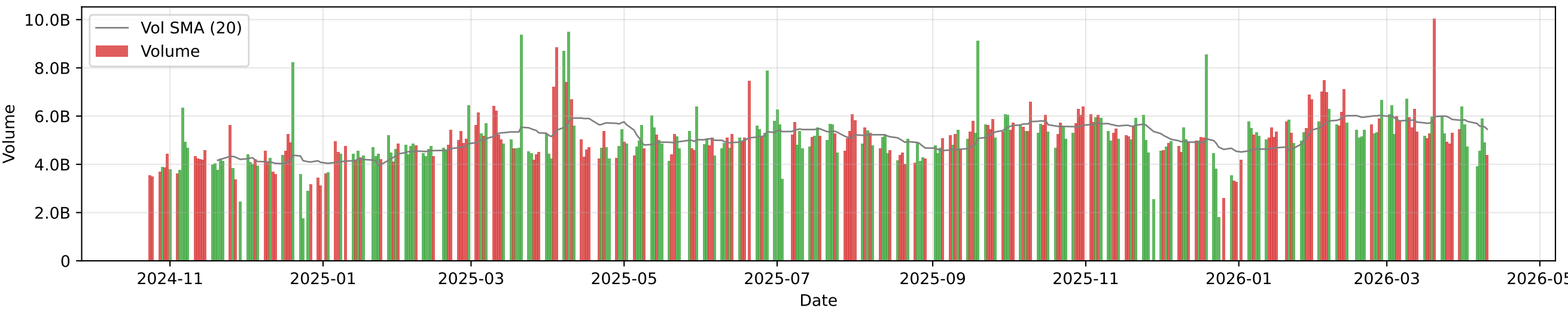
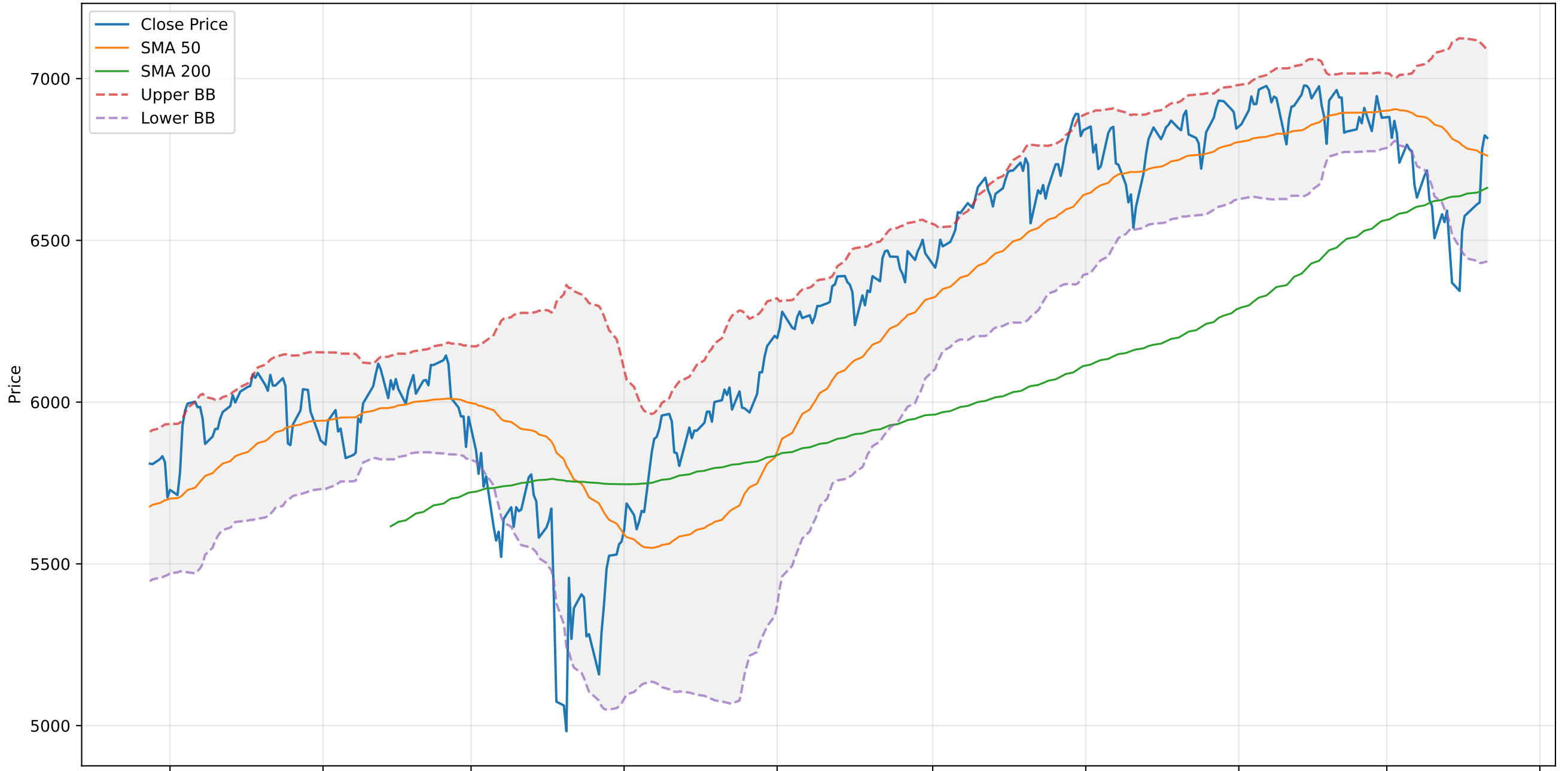
^GSPC: MACD (last 365 days)



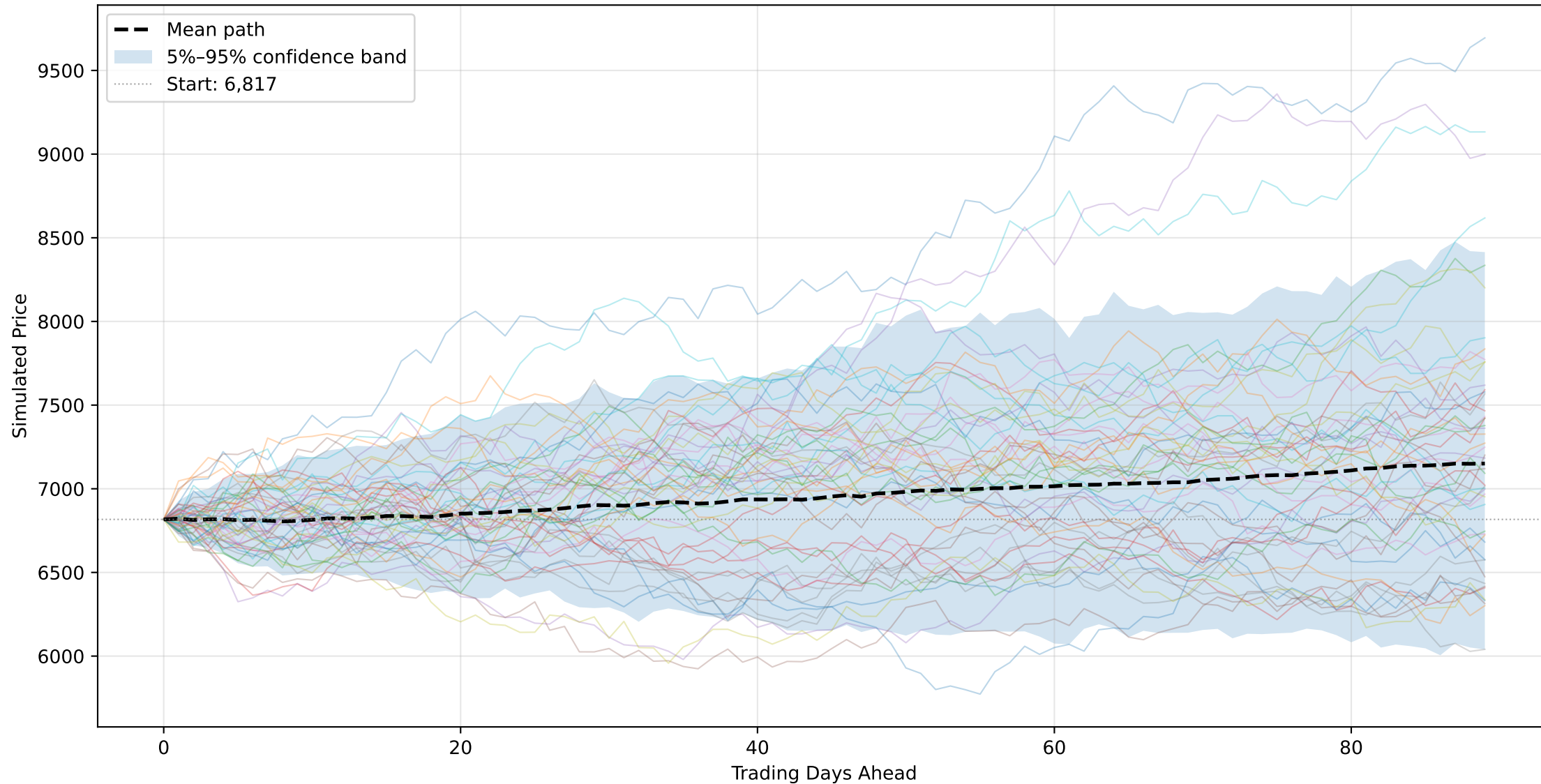
^GSPC: RSI (21) (last 365 days)



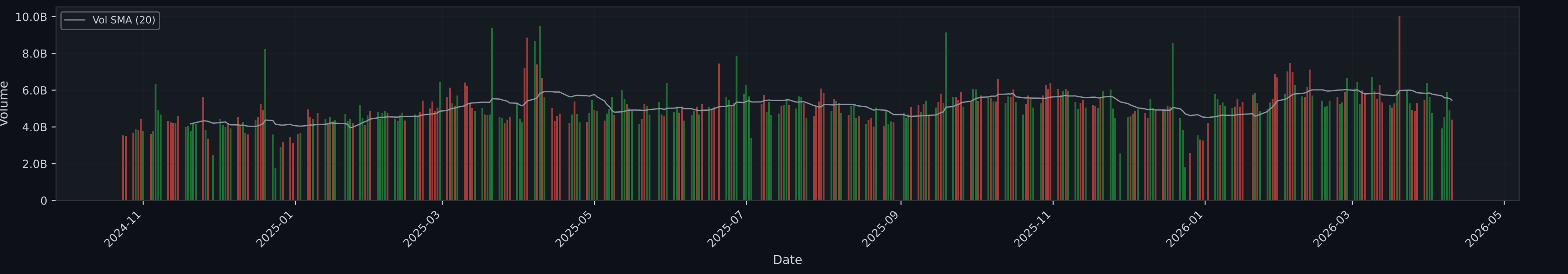
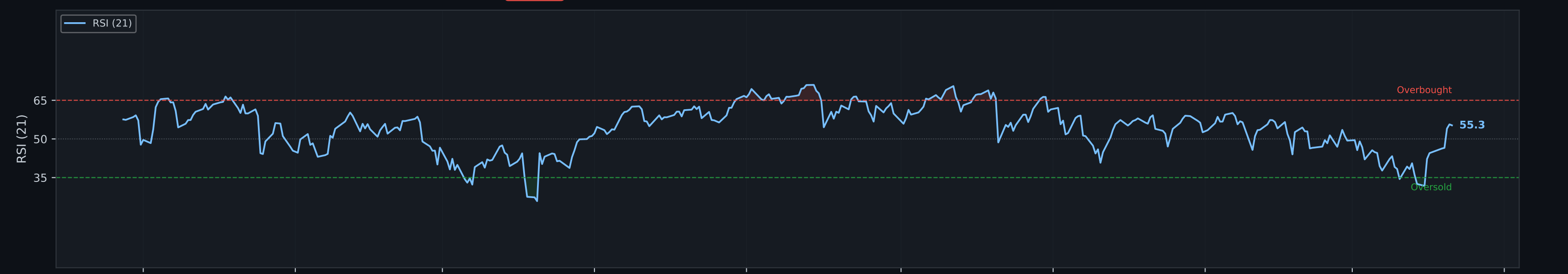
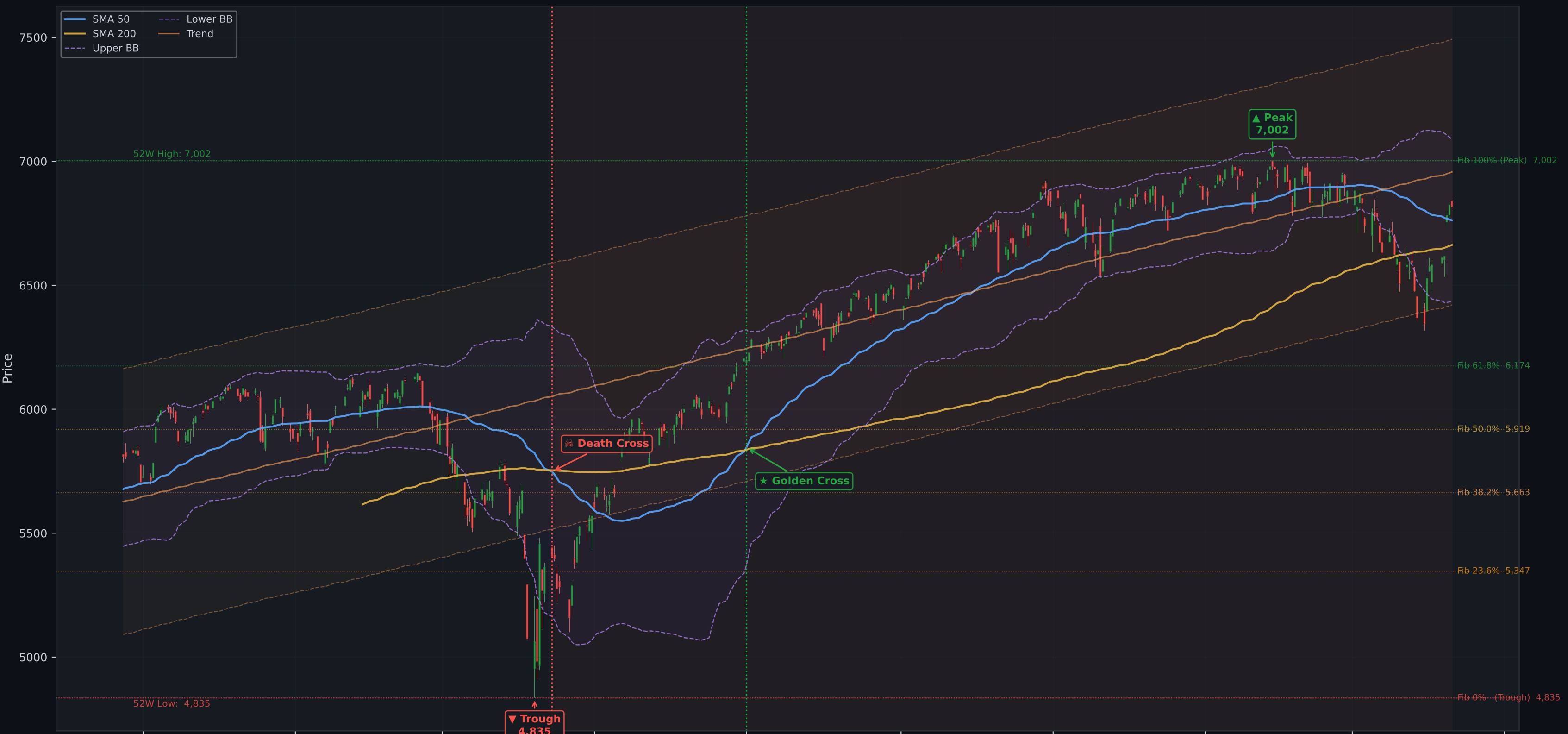
^GSPC: Price & Volume (last 365 days)



^GSPC: Monte Carlo Simulation (200 paths · 90 trading days forward)



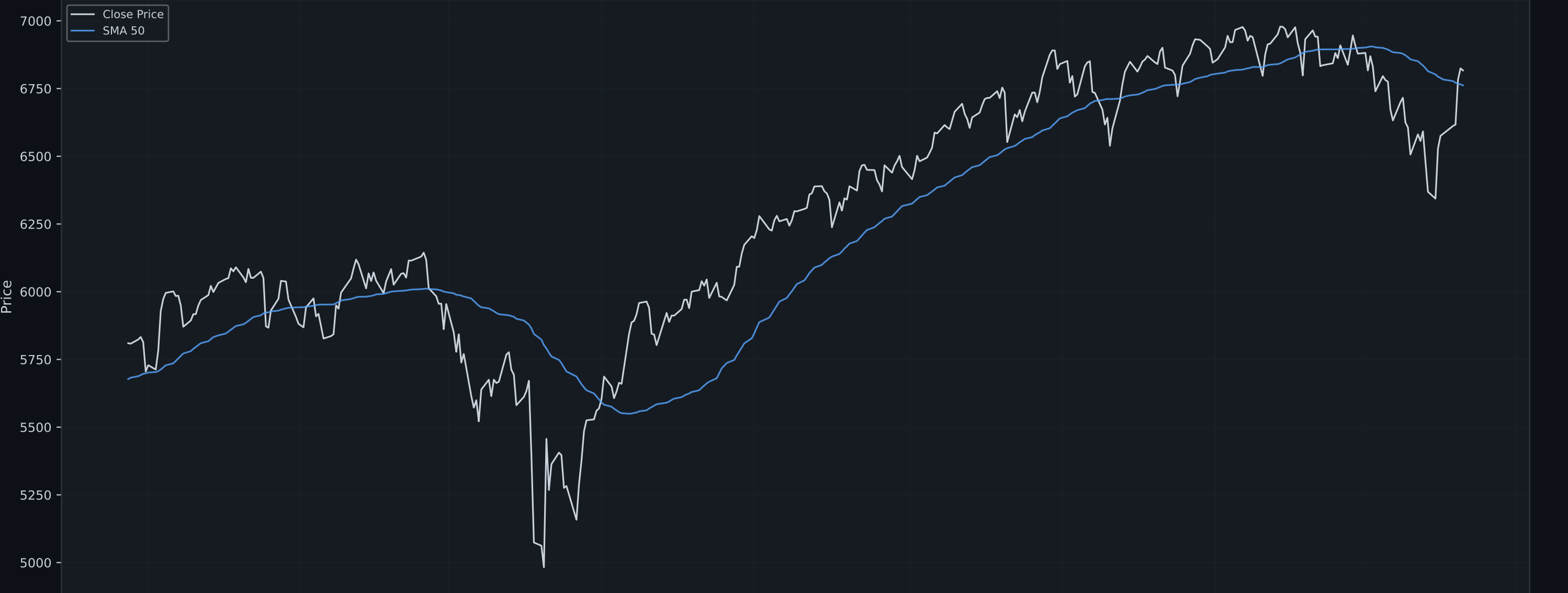
^GSPC: Candlestick Analysis (365 Days · Daily candles) | Peak→Trough: -31.0%



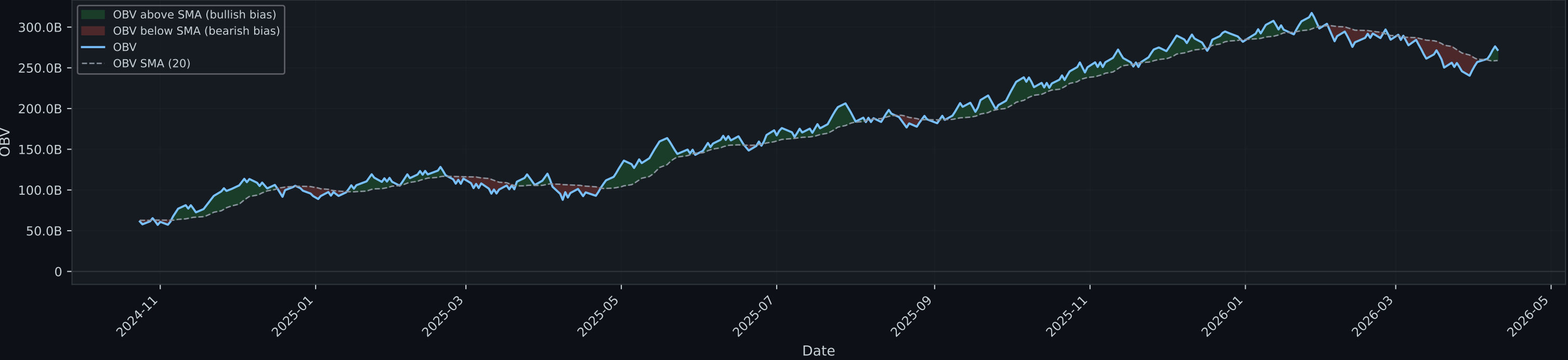
Technical Signal Summary: ^GSPC (last 365 days)

Indicator	Signal / Value
Current Price	6,816.89
SMA 20	6,602.20
SMA 50 Trend	Bullish ▲
SMA 200 Trend	Bullish ▲
Death Cross Status	☠️ Death Cross active (gap 2.36%)
RSI 14	Neutral (60.0)
RSI 21 (smooth)	Neutral (55.3)
MACD Signal	Bullish Cross (-5.2)
Bollinger Position	Within Bands (92% from low)
Bollinger Width (Vol)	7.71% (Elevated)
Drawdown from 1Y Peak	-2.65%

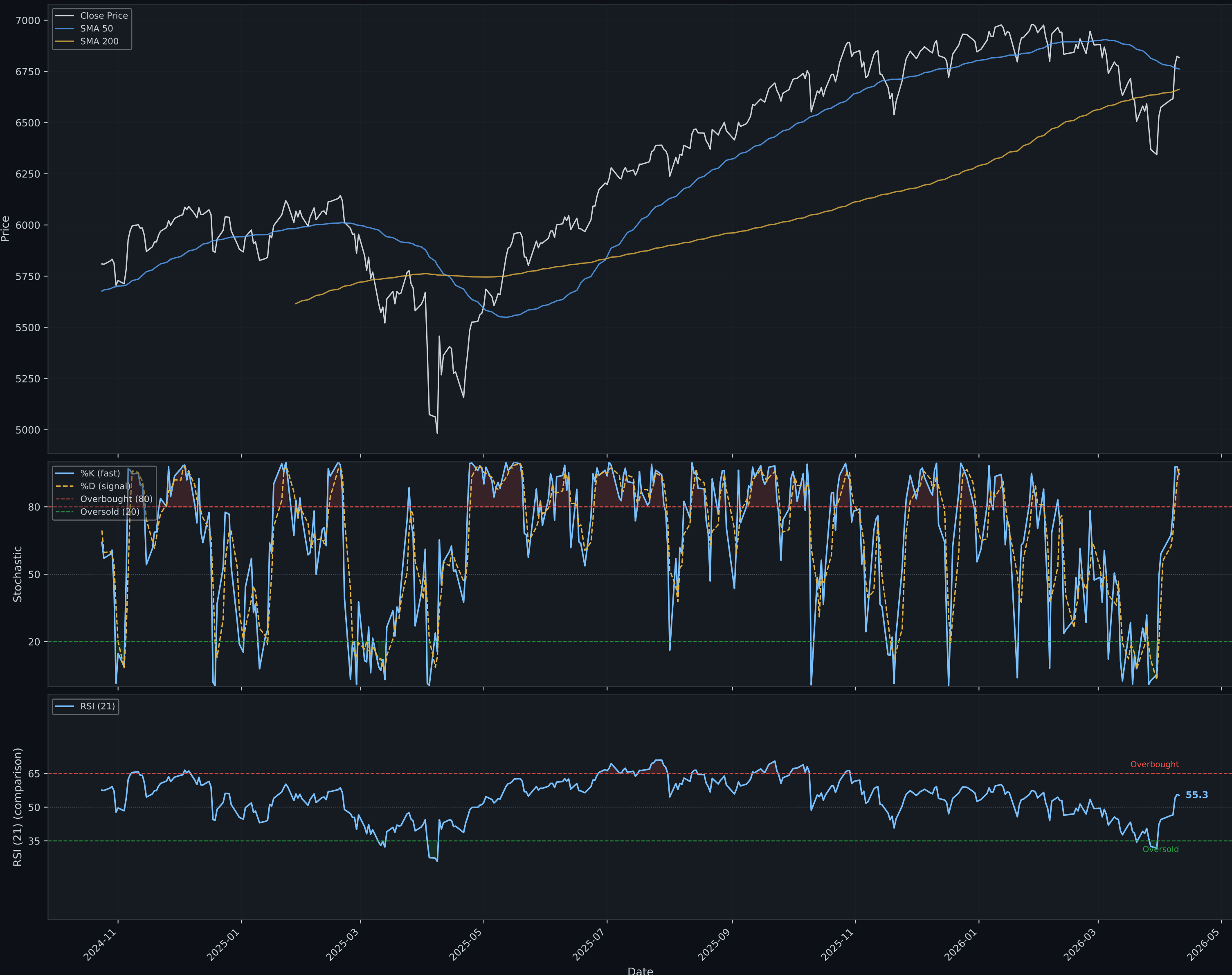
^GSPC: ATR — Volatility Analysis (last 365 days)



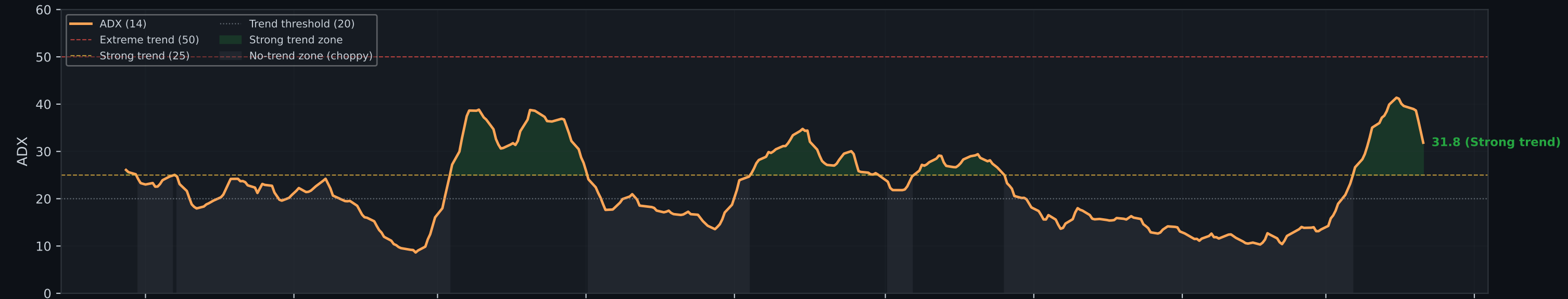
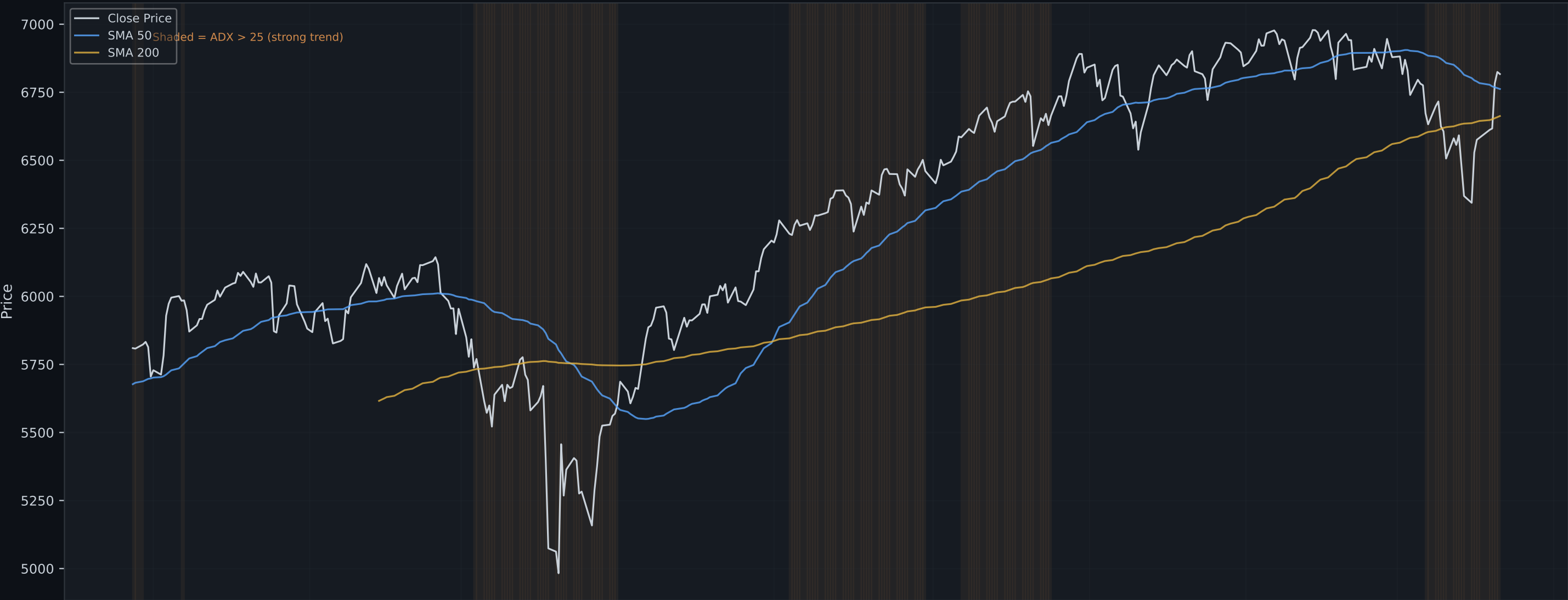
^GSPC: OBV — Volume Accumulation / Distribution (last 365 days)



^GSPC: Stochastic Oscillator vs RSI (last 365 days)



^GSPC: ADX — Trend Strength Analysis (last 365 days)



Bullish

1. Trend Analysis (SMA · Death Cross)

Price (6,816.89) is 0.8% ABOVE SMA 50 (6,761.97). The medium-term trend is bullish — SMA 50 is acting as dynamic support.

Price is 2.3% above SMA 200 (6,662.62) — long-term bull market structure. Institutional sentiment is constructive.

☠️ Death Cross active: SMA 20 is 2.36% below SMA 50. Short-term momentum has turned negative vs the medium-term trend. The gap is stable — the signal is established but not accelerating.

Elevated

2. Volatility (Bollinger Bands · ATR)

Bollinger Band width is 7.71% of price — significantly elevated. High-volatility environment: large daily swings are normal right now. Breakout moves are likely to be sharp and fast.

Price is within the Bollinger Bands (92% from lower band), in the upper half of the envelope. No extreme reading.

ATR(14) = 98.41 (1.44% of price) — average daily range. This is 28% above the 365-day window average, indicating rising volatility. Useful for stop-loss: place stops $\sim 1.5\text{--}2\times$ ATR from entry.

3. Momentum (RSI · Stochastic · MACD)

Neutral

RSI 21 = 55.3 — neutral-to-bullish (above 50). Buyers have slight control. Trend: rising for 3+ sessions — momentum building.

Stochastic %K = 94.5 — price near the TOP of its 14-day range. %K is bearish vs %D. Combined with RSI: Stochastic alone is overbought; RSI not at extreme.

MACD (-5.19) is above Signal (-51.48) — bullish crossover. Both are below zero (overall trend is negative).

Gap between MACD and Signal: 46.29 and widening — momentum accelerating.

Accumulation

4. Volume & Flow (OBV)

OBV (271,993,110,000) is above its 20-day SMA (258,960,001,500). More volume has been on up days than down days recently. This is consistent with institutional accumulation.

Over the 365-day window, OBV has been rising (+343.5%), consistent with the recent signal above — volume flow confirms buyer control across both short and long term.

Strong downtrend

5. Trend Strength (ADX · +DI / −DI)

ADX = strong (31.8 > 25) — well-established, tradeable trend. Trend is fading over the last 3 sessions.

Momentum indicators (RSI, MACD) are reliable here.

−DI (30.8) > +DI (29.5) — downward directional pressure dominant. Gap = 1.3 pts. Narrow gap — watch for a potential crossover.

6. Drawdown & Price Position

Minor Pullback

Price is 2.6% below the 1-year high (7,002.28) — minor pullback. Normal within an uptrend; does not signal reversal.

Within the 365-day window: peak 7,002 → trough 4,835 = 31.0% drawdown.

7. Overall Verdict

BULLISH

Signal confidence: Low (27%)

The weight of evidence across all indicators points to a bullish bias. Trend, momentum, and volume signals are broadly aligned to the upside. Pullbacks towards support levels represent potential buying opportunities, provided risk management protocols are followed.

How this verdict was calculated — Adaptive Weighted Scoring

	▲ Trend	▼ Volatility	▲ Momentum	▲ Volume	● ADX	▲ Drawdown
Section	Weight	Score	Contribution	Signal		
Trend (SMA · Death Cross)	30%	+0.33	+0.100	Bullish		
Momentum (RSI · Stoch · MACD)	25%	+0.17	+0.042	Neutral		
Trend Strength (ADX · DI)	20%	+0.00	+0.000	Strong downtrend		
Volume & Flow (OBV)	15%	+0.75	+0.112	Accumulation		
Drawdown & Position	8%	+0.50	+0.040	Minor Pullback		
Volatility (BB · ATR)	2%	-1.00	-0.020	Elevated		
Weighted Total	100%		+0.274			

† Trend Strength scores 0: ADX confirms a strong trend exists, but direction is not added again — it is already captured in Section 1 (SMA · Death Cross). This avoids double-counting.

Verdict rule: score > +0.25 → BULLISH | score < -0.25 → BEARISH | otherwise → NEUTRAL/MIXED (N_DAYS = 365)

△ **DISCLAIMER:** This report is for educational purposes only and does not constitute financial advice. Analysis is based on historical data and automated indicators which are lagging by nature. Monte Carlo simulations are probabilistic and not price guarantees.