

Financial Analysis Report

Ticker: ^GSPC

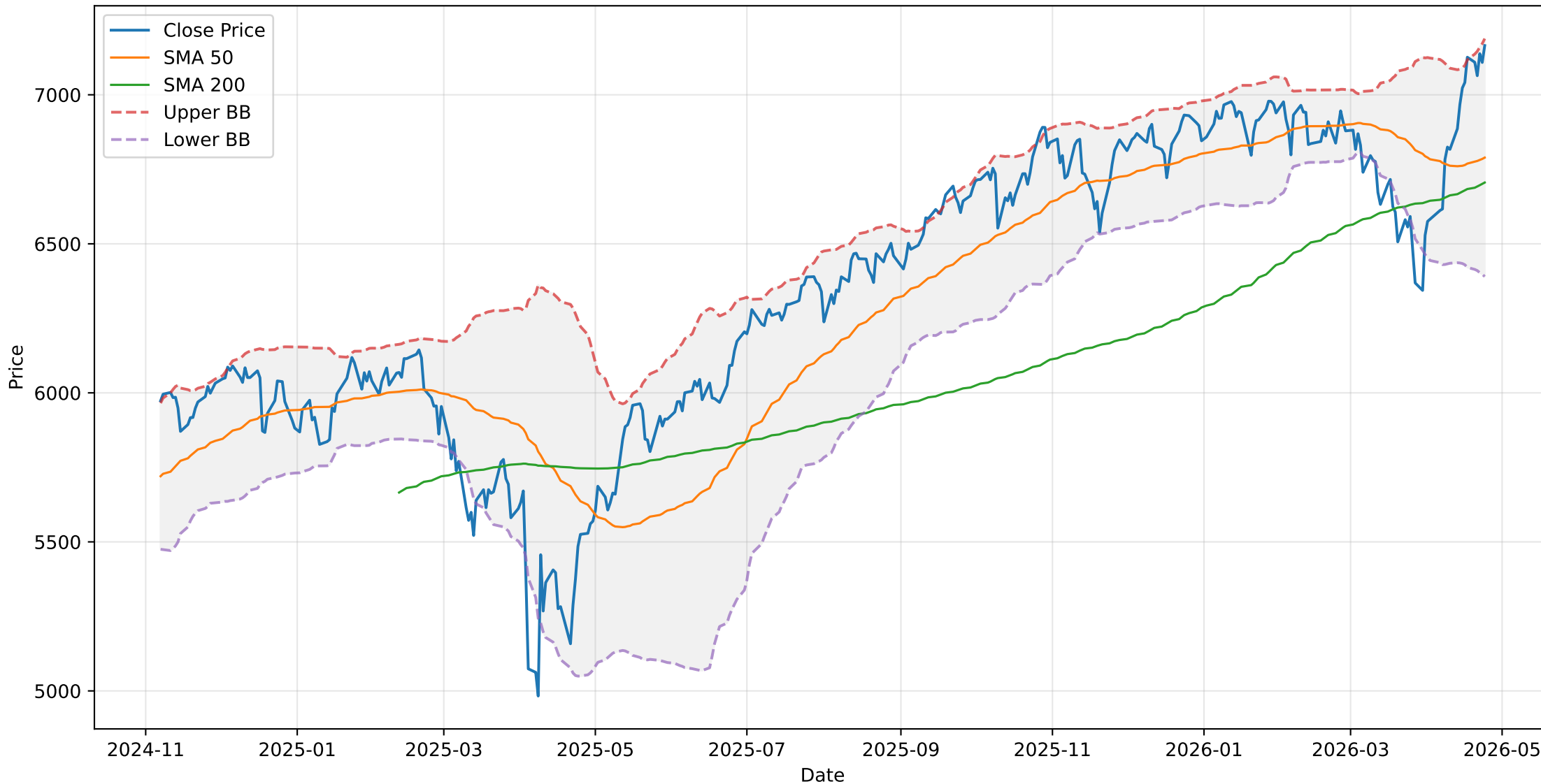
Analysis window: last 365 trading days

Indicators: SMA · BB · MACD · RSI · Fibonacci · Monte Carlo · ATR · OBV · Stochastic · ADX

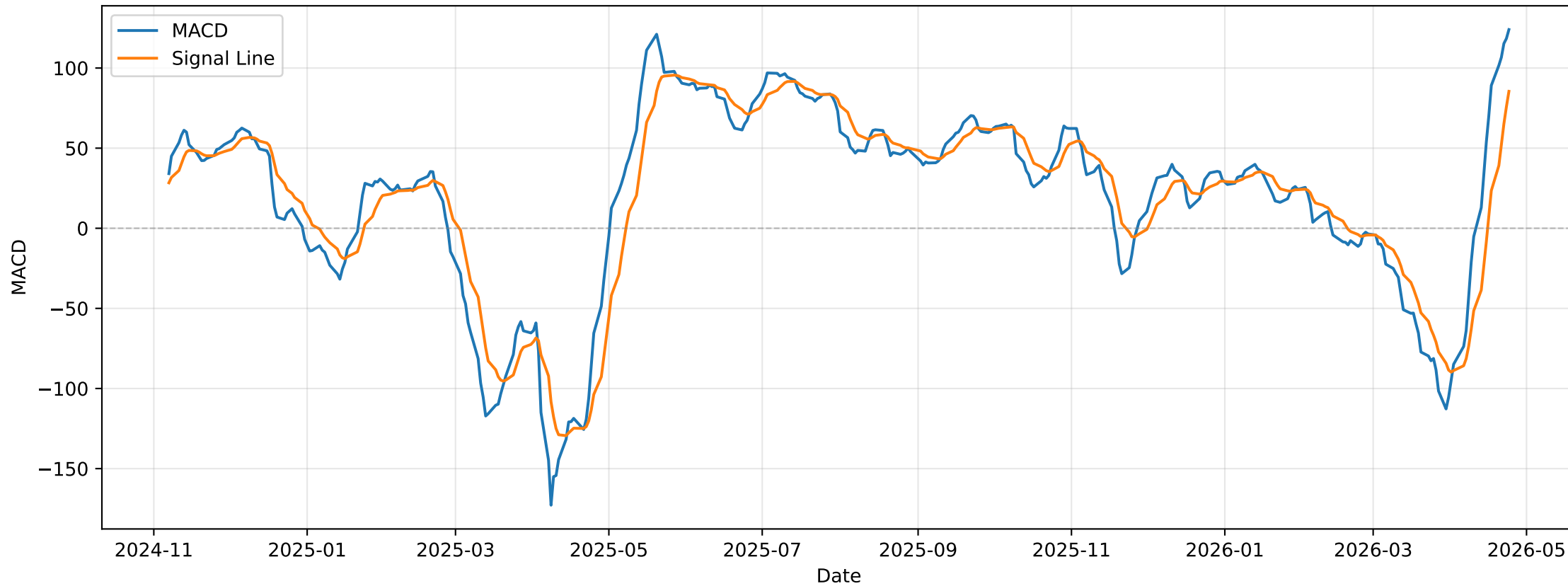
Generated: April 25, 2026 12:03 AM

@lbarqueira.bsky.social — Generated with Python and matplotlib

^GSPC: Price & Bollinger Bands (last 365 days)



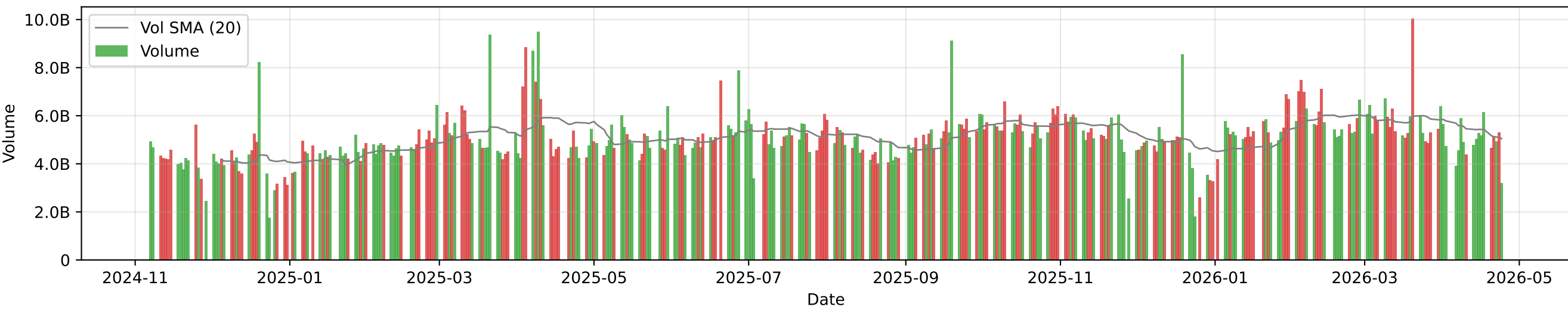
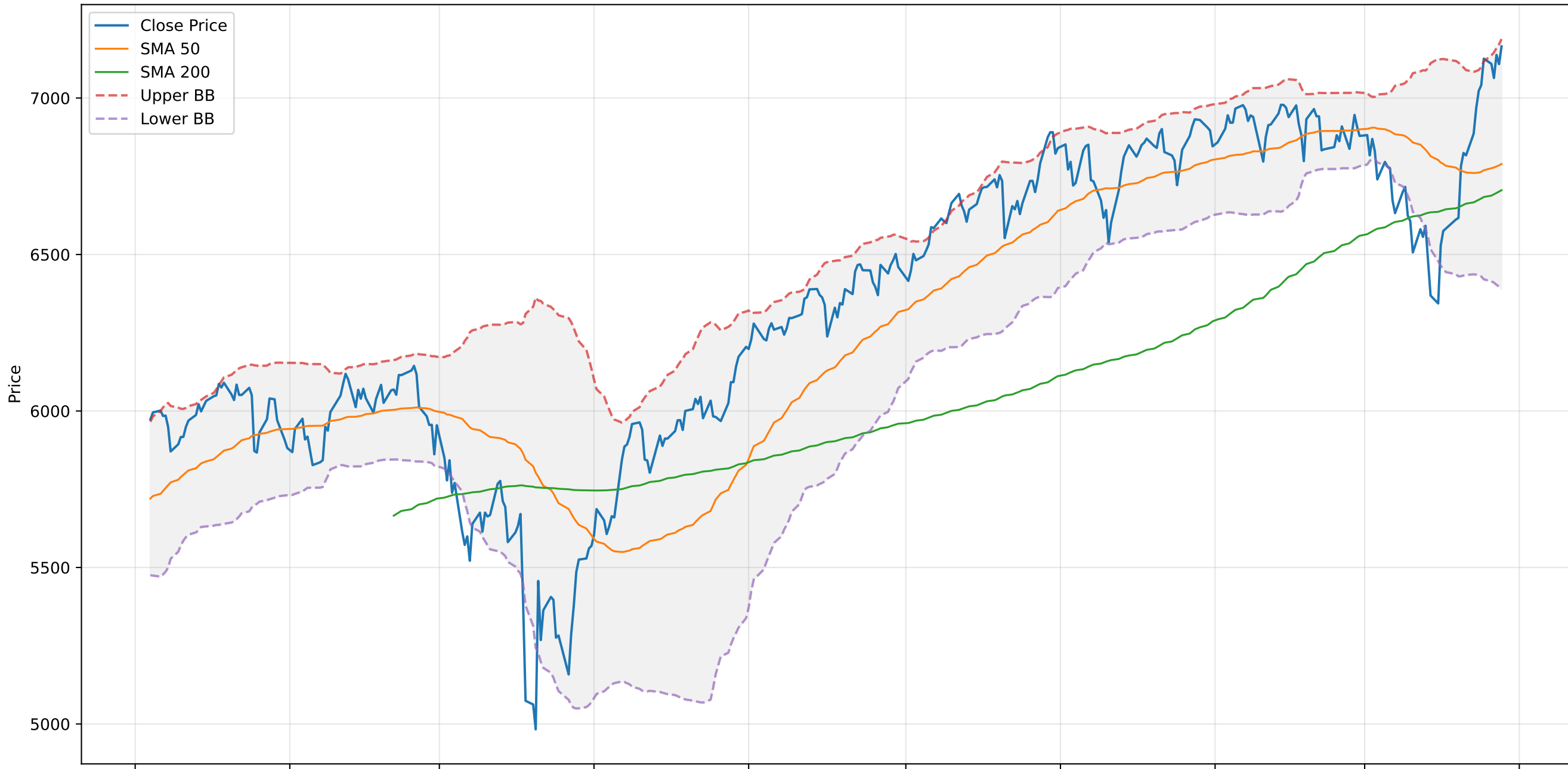
^GSPC: MACD (last 365 days)



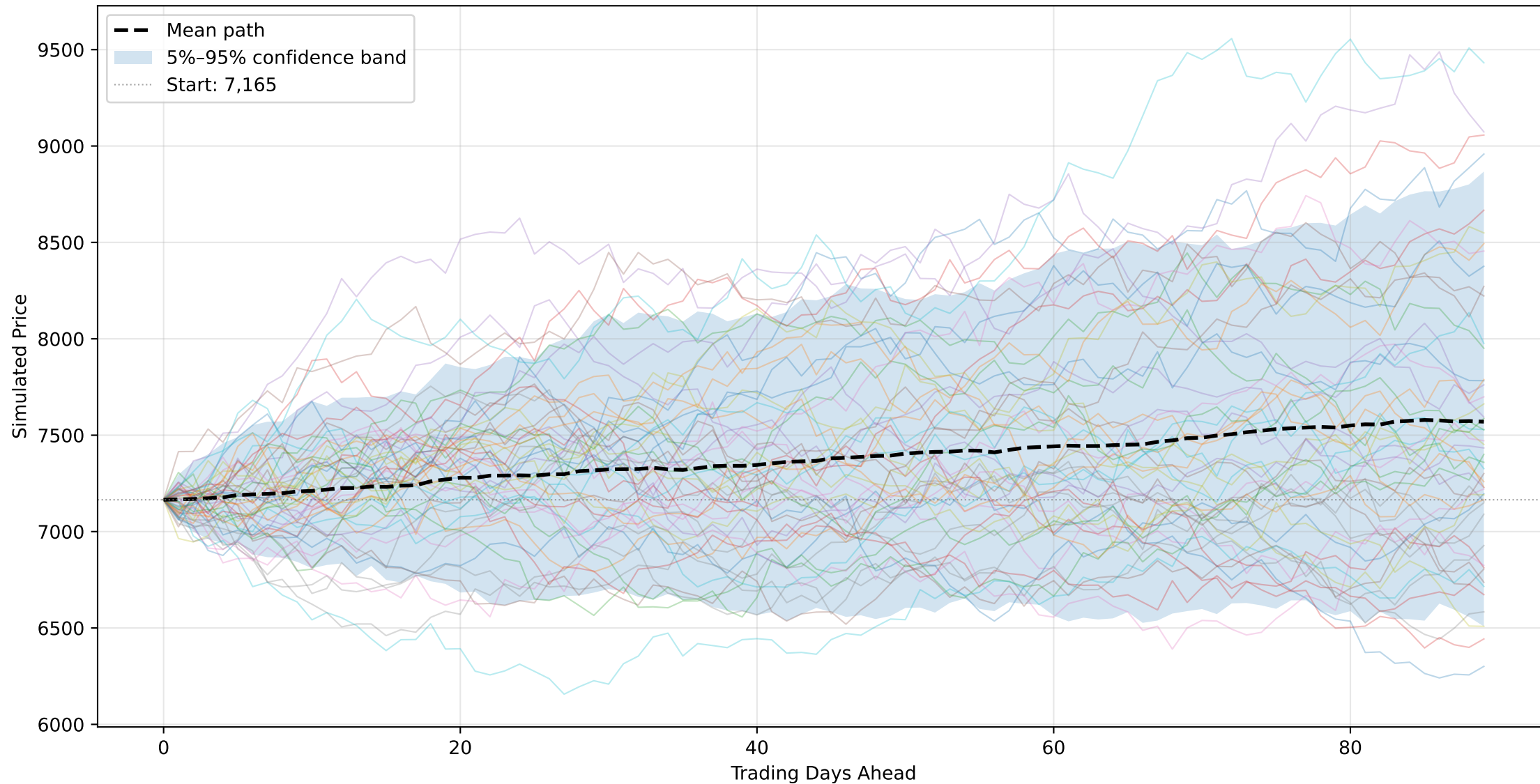
^GSPC: RSI (21) (last 365 days)



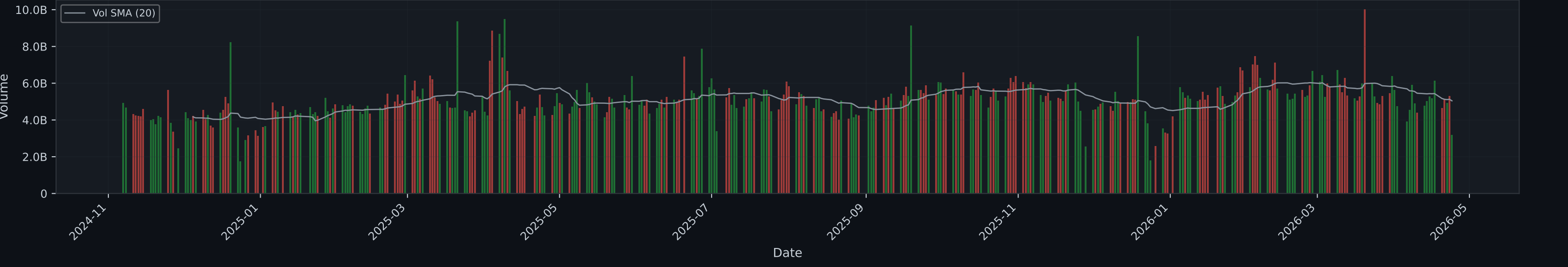
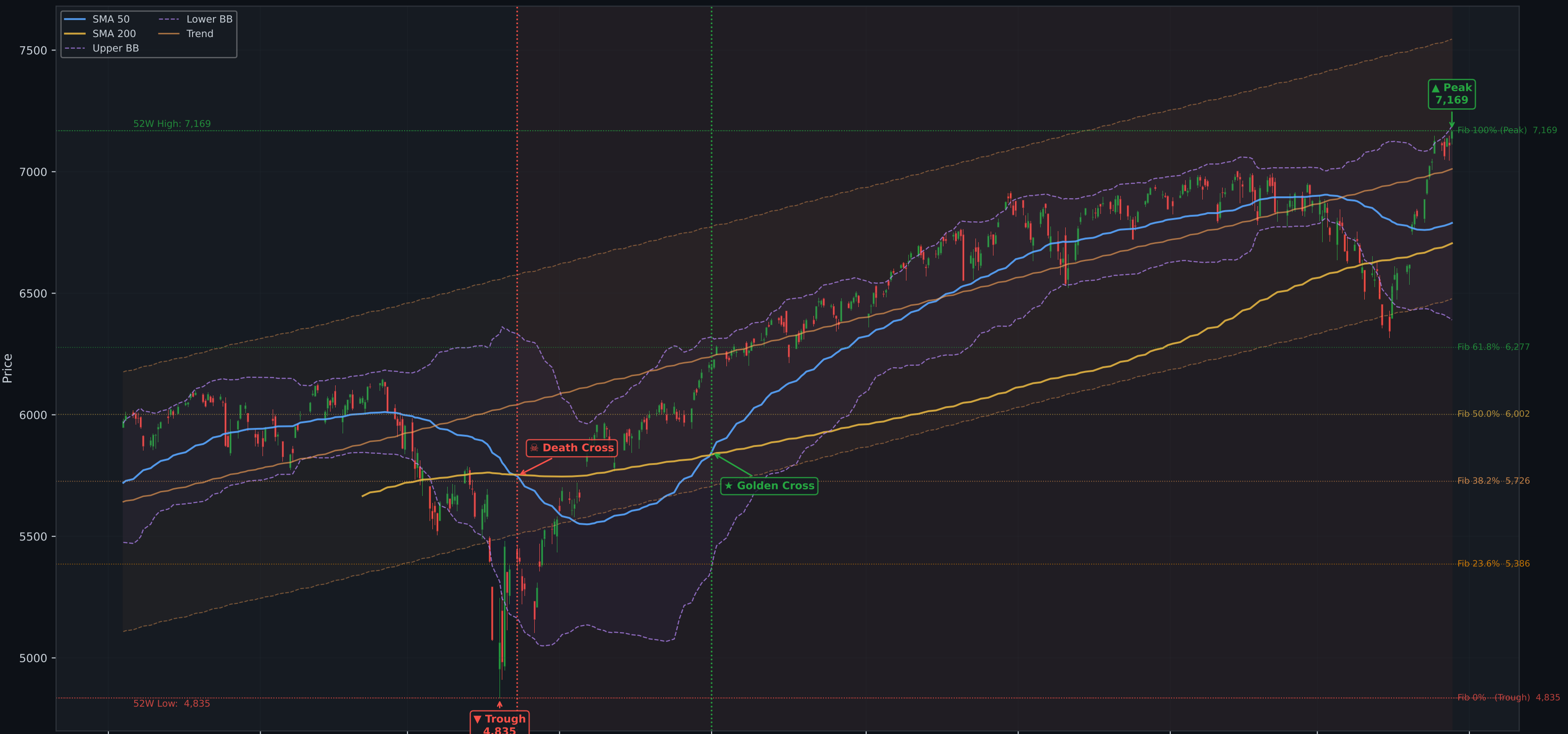
^GSPC: Price & Volume (last 365 days)



^GSPC: Monte Carlo Simulation (200 paths · 90 trading days forward)



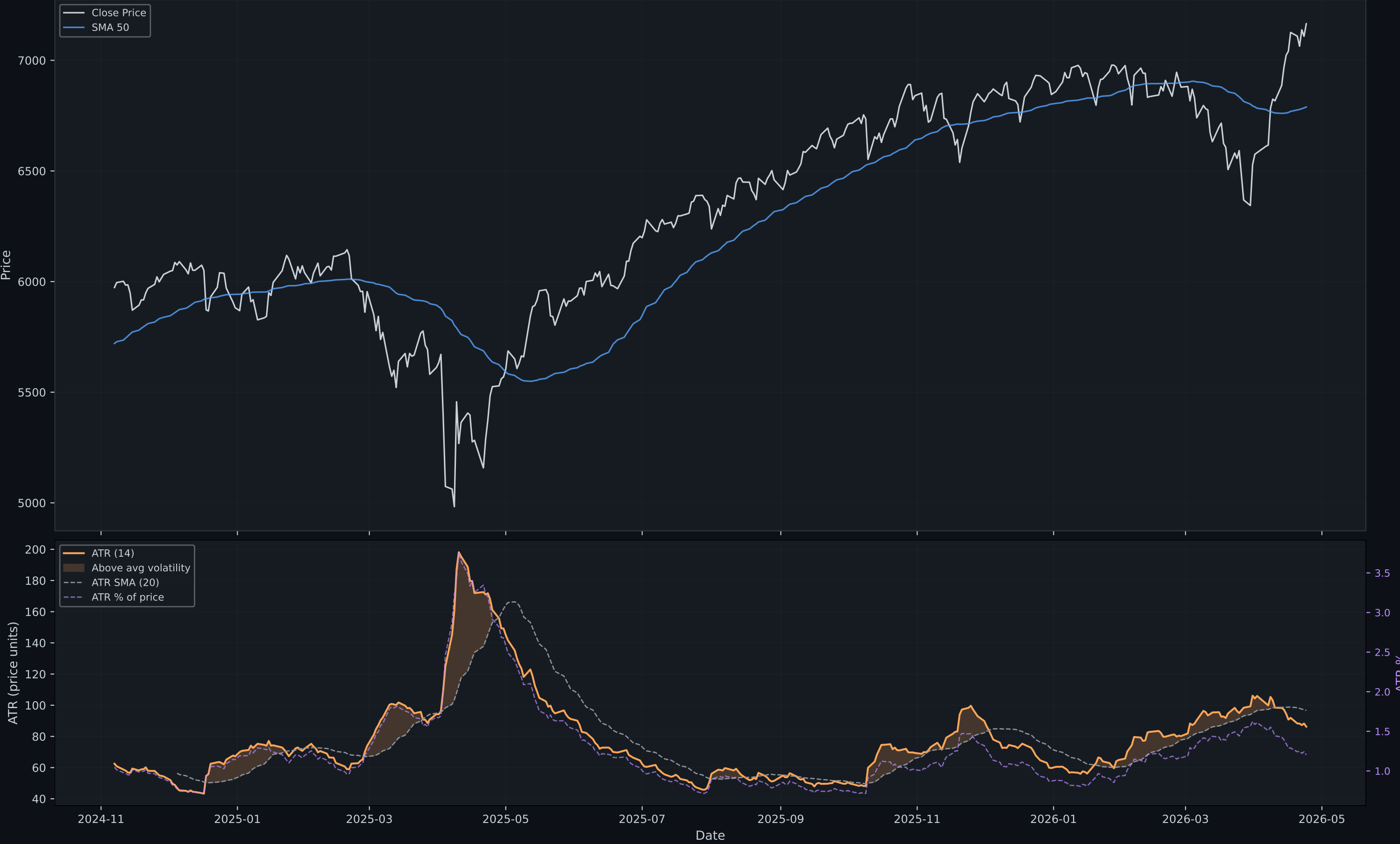
^GSPC: Candlestick Analysis (365 Days · Daily candles) | Peak→Trough: -32.6%



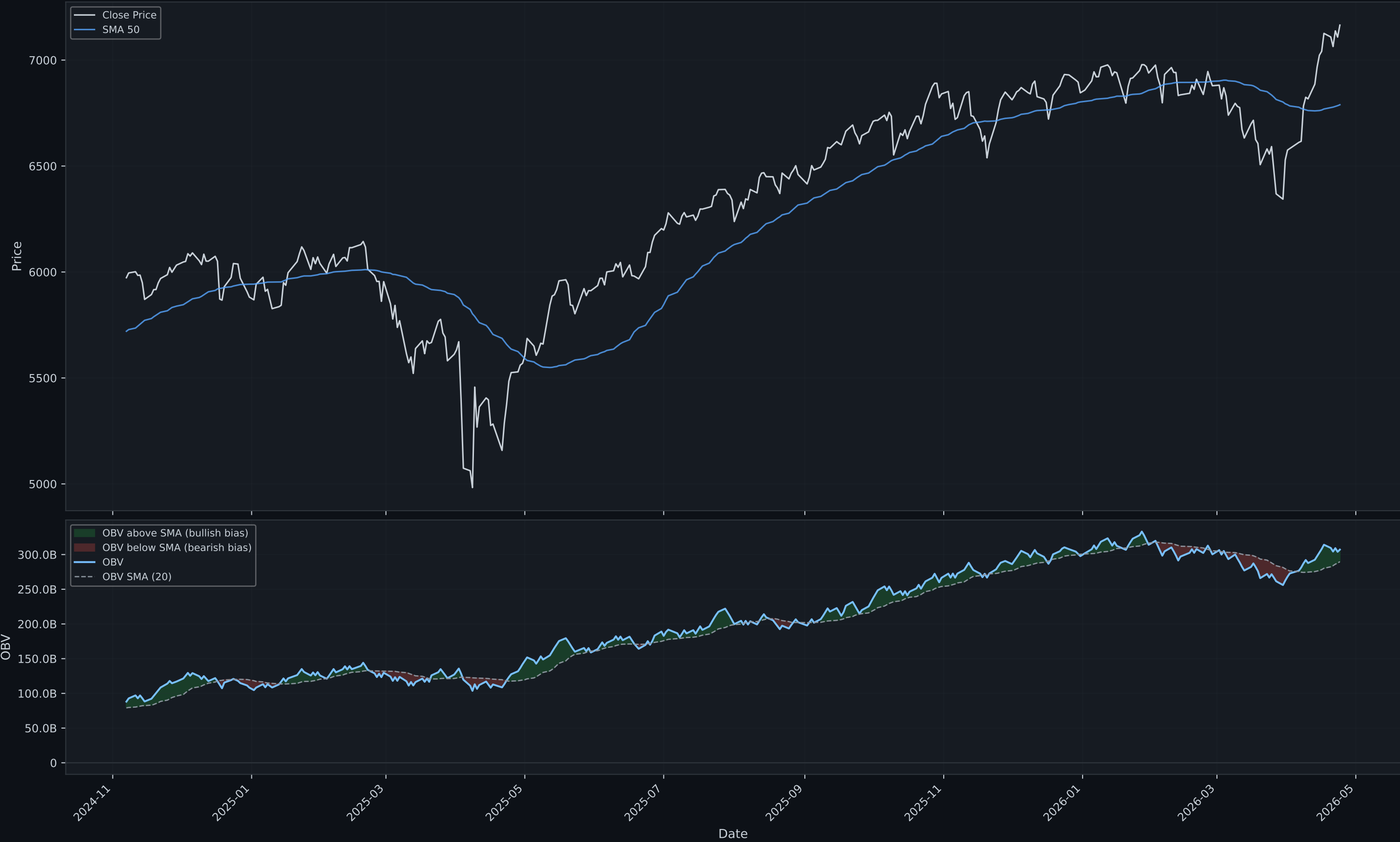
Technical Signal Summary: ^GSPC (last 365 days)

Indicator	Signal / Value
Current Price	7,165.08
SMA 20	6,834.03
SMA 50 Trend	Bullish ▲
SMA 200 Trend	Bullish ▲
Death Cross Status	★ No Death Cross (SMA50 leads SMA200 by 1.25%)
RSI 14	Overbought (70.1)
RSI 21 (smooth)	Overbought (65.0)
MACD Signal	Bullish Cross (124.0)
Bollinger Position	Within Bands (81% from low)
Bollinger Width (Vol)	15.72% (Elevated)
Drawdown from 1Y Peak	-0.05%

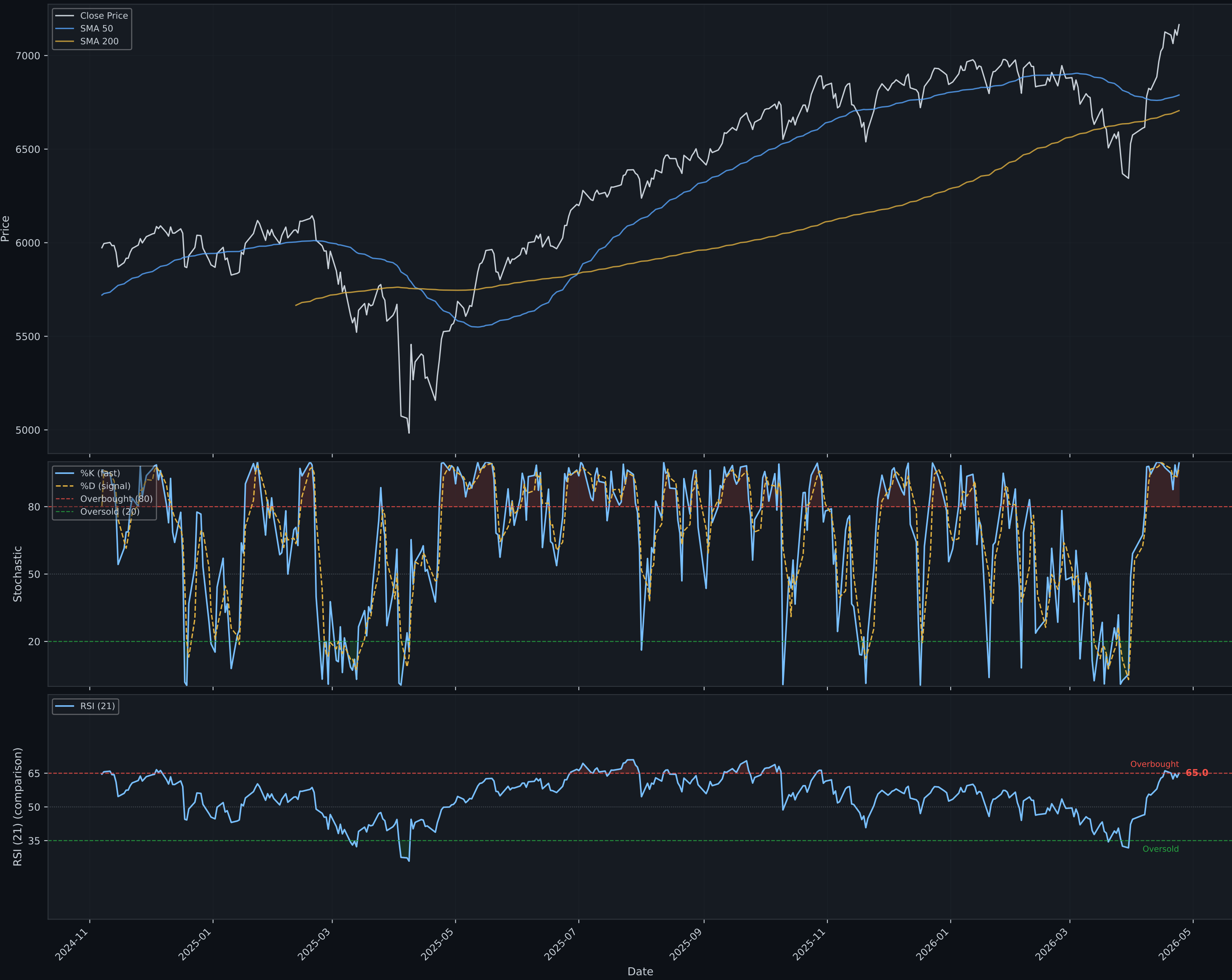
^GSPC: ATR — Volatility Analysis (last 365 days)



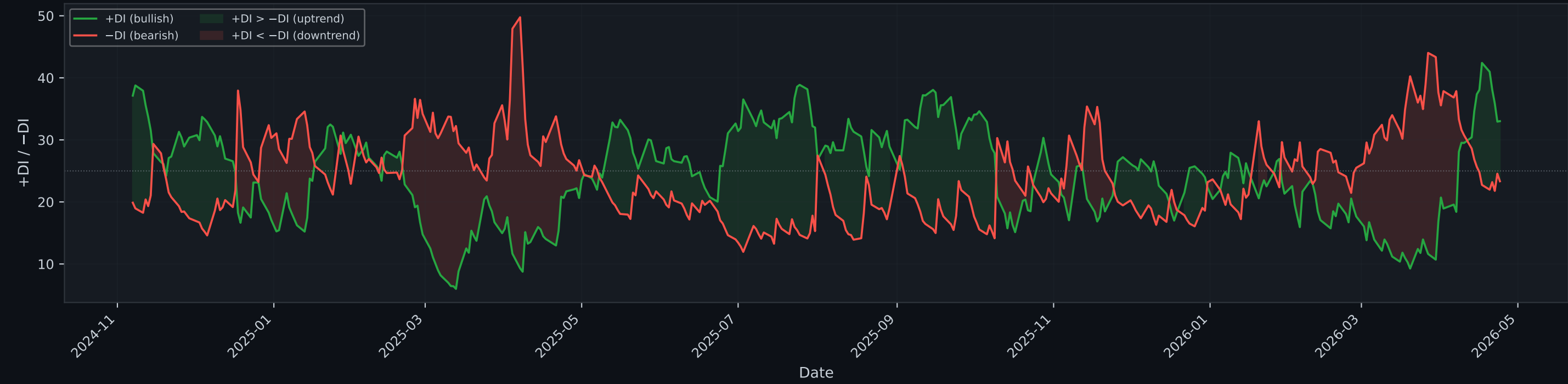
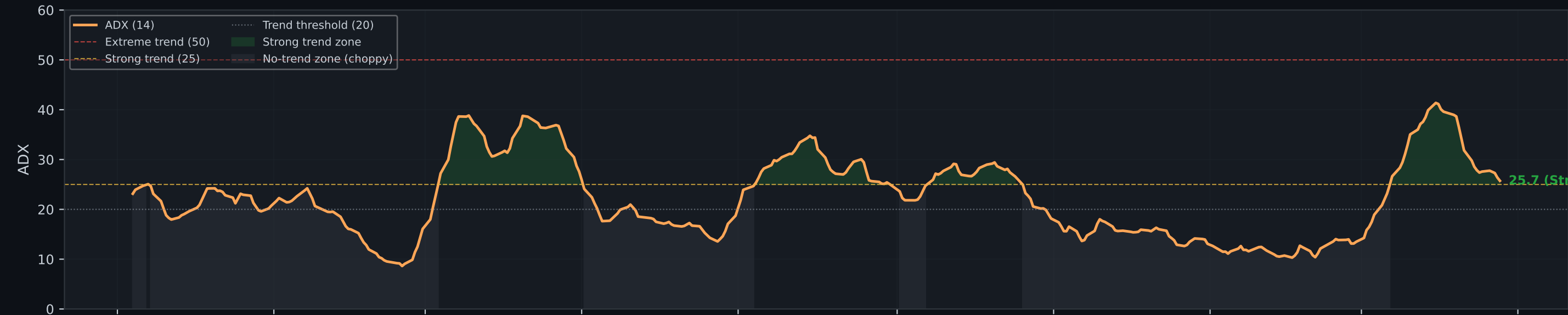
^GSPC: OBV — Volume Accumulation / Distribution (last 365 days)



^GSPC: Stochastic Oscillator vs RSI (last 365 days)



^GSPC: ADX — Trend Strength Analysis (last 365 days)



Bullish

1. Trend Analysis (SMA 50/200 - Death Cross)

Price (7,165.08) is 5.5% ABOVE SMA 50 (6,789.27). The medium-term trend is bullish — SMA 50 is acting as dynamic support.

Price is 6.9% above SMA 200 (6,705.59) — long-term bull market structure. Institutional sentiment is constructive.

★ No Death Cross — SMA 50 is 1.25% above SMA 200. The medium-term trend is aligned above the long-term institutional benchmark. The alignment is stable.

2. Volatility (Bollinger Bands · ATR)

Elevated

Bollinger Band width is 15.72% of price — significantly elevated. High-volatility environment: large daily swings are normal right now. Breakout moves are likely to be sharp and fast.

Price is within the Bollinger Bands (81% from lower band), in the upper half of the envelope. No extreme reading.

ATR(14) = 86.25 (1.20% of price) — average daily range. This is 11% above the 365-day window average, indicating rising volatility. Useful for stop-loss: place stops $\sim 1.5\text{--}2\times$ ATR from entry.

3. Momentum (RSI-21 · Stochastic · MACD)

Mixed / Caution

RSI 21 = 65.0 — overbought (above 65). Momentum has been very strong but is statistically stretched. RSI has been rising for 3+ days — overbought is deepening. Strong trends can stay overbought for weeks; confirm with price action.

Stochastic %K = 99.4 — price near the TOP of its 14-day range. %K is bullish vs %D. Combined with RSI: double overbought — caution warranted, but MACD remains bullish (no confirmed sell signal).

MACD (124.00) is above Signal (85.47) — bullish crossover. Both are above zero (overall trend is positive).

Gap between MACD and Signal: 38.54 and narrowing — momentum may be fading.

Accumulation

4. Volume & Flow (OBV)

OBV (307,122,655,000) is above its 20-day SMA (289,770,698,750). More volume has been on up days than down days recently. This is consistent with institutional accumulation.

Over the 365-day window, OBV has been rising (+248.7%), consistent with the recent signal above — volume flow confirms buyer control across both short and long term.

Strong uptrend

5. Trend Strength (ADX · +DI / −DI)

ADX = strong ($25.7 > 25$) — well-established, tradeable trend. Trend is fading over the last 3 sessions.

Momentum indicators (RSI, MACD) are reliable here.

+DI (33.0) > −DI (23.3) — upward directional pressure dominant. Gap = 9.7 pts. Narrow gap — directional edge

is modest; watch for a crossover.

Minor Pullback

6. Drawdown & Price Position

Price is 0.0% below the 1-year high (7,168.59) — minor pullback. Normal within an uptrend; does not signal reversal.

Within the 365-day window: peak 7,169 → trough 4,835 = 32.6% drawdown.

7. Overall Verdict

BULLISH

Signal confidence: Moderate (54%)

The weight of evidence points to a bullish bias (signal confidence: Moderate). Trend and volume signals are aligned to the upside, though some indicators are mixed. Pullbacks towards support represent potential buying opportunities, provided risk management is followed.

How this verdict was calculated — Adaptive Weighted Scoring

Coloured pills (left→right) match table rows (top→bottom). Each pill colour and label corresponds to the row directly below it.

▲ Trend

▼ Momentum

▲ Trend Strength

▲ Volume & Flow

▲ Drawdown & Position

▼ Volatility

Section	Weight	Score	Contribution	Signal
Trend (SMA · Death Cross)	30%	+1.00	+0.300	Bullish
Momentum (RSI · Stoch · MACD)	25%	-0.15	-0.037	Mixed / Caution
Trend Strength (ADX · DI)	20%	+1.00	+0.200	Strong uptrend
Volume & Flow (OBV)	15%	+0.75	+0.112	Accumulation
Drawdown & Position	8%	+0.50	+0.040	Minor Pullback
Volatility (BB · ATR)	2%	-1.00	-0.020	Elevated
	Weighted Total	100%		+0.595

Verdict rule: score > +0.25 → BULLISH | score < -0.25 → BEARISH | otherwise → NEUTRAL/MIXED (N_DAYS = 365)

△ **DISCLAIMER:** This report is for educational purposes only and does not constitute financial advice. Analysis is based on historical data and automated indicators which are lagging by nature. Monte Carlo simulations are probabilistic and not price guarantees.